

# ZytoLight® SPEC MYB/CEN 6 Dual Color Probe



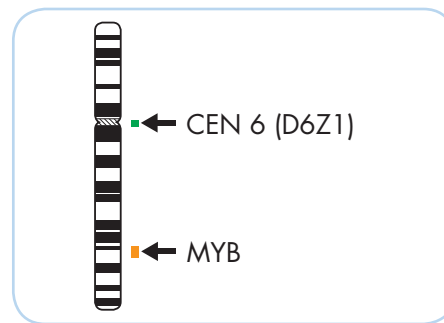
## Background

The ZytoLight® SPEC MYB/CEN 6 Dual Color Probe (PL236) is intended to be used for the qualitative detection of deletions involving the human MYB gene and the detection of chromosome 6 alpha satellites in cytologic specimens by fluorescence *in situ* hybridization (FISH). The probe is intended to be used in combination with the ZytoLight® FISH-Cytology Implementation Kit (Prod. No. Z-2099-20). The product is intended for professional use only. All tests using the product should be performed in a certified, licensed anatomic pathology laboratory under the supervision of a pathologist/human geneticist by qualified personnel. The probe is intended to be used as an aid to the differential diagnosis of various cancers and therapeutic measures should not be initiated based on the test result alone.

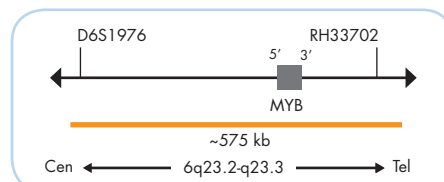
## Probe Description

The ZytoLight® SPEC MYB/CEN 6 Dual Color Probe is composed of:

- ZyOrange (excitation 547 nm/emission 572 nm) labeled polynucleotides (~4.5 ng/μl), which target sequences mapping in 6q23.2-q23.3\*\* (chr6:135,141,227-135,715,246) harboring the MYB gene region.
- ZyGreen (excitation 503 nm/emission 528 nm) labeled polynucleotides (~4.5 ng/μl), which target sequences mapping in 6p11.1-q11 specific for the alpha satellite centromeric region D6Z1 of chromosome 6.
- Formamide based hybridization buffer



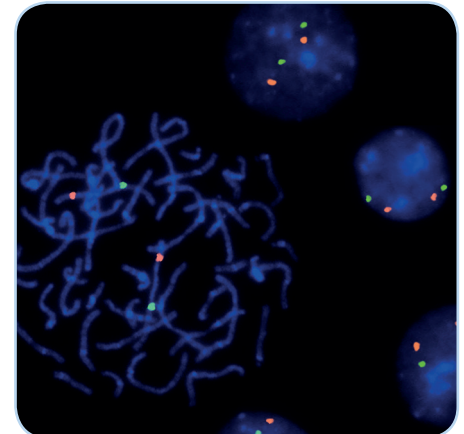
Ideogram of chromosome 6 indicating the hybridization locations.



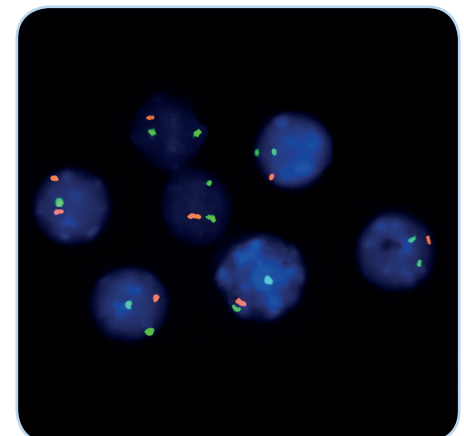
SPEC MYB Probe map (not to scale).

## Results

In a normal interphase nucleus, two green and two orange signals are expected. In a cell with deletion affecting the 6q23.3 locus, one or no copy of the orange signal will be observed.



SPEC MYB/CEN 6 Dual Color Probe hybridized to normal interphase cells as indicated by two orange and two green signals in each nucleus and to metaphase chromosomes of a normal cell.



Example of an aberrant signal pattern: Blood smear with deletion of the MYB gene as indicated by one orange signal in each nucleus.

Prod. No.	Product	Label	Tests* (Volume)
Z-2281-50	ZytoLight SPEC MYB/CEN 6 Dual Color Probe CE IVD	●/●	5 (50 μl)
<b>Related Products</b>			
Z-2099-20	ZytoLight FISH-Cytology Implementation Kit CE IVD		20
Incl. Cytology Pepsin Solution, 4 ml; 20x Wash Buffer TBS, 50 ml; 10x MgCl <sub>2</sub> , 50 ml; 10x PBS, 50 ml; Cytology Stringency Wash Buffer SSC, 500 ml; Cytology Wash Buffer SSC, 500 ml; DAPI/DuraTect-Solution, 0.8 ml			

\* Using 10 μl probe solution per test. IVD labeled products are only available in certain countries. All other countries research use only! Please contact your local dealer for more information.

\*\*According to Human Genome Assembly GRCh37/hg19