

# ZytoLight® SPEC 1p36/1q25 Dual Color Probe



## Background

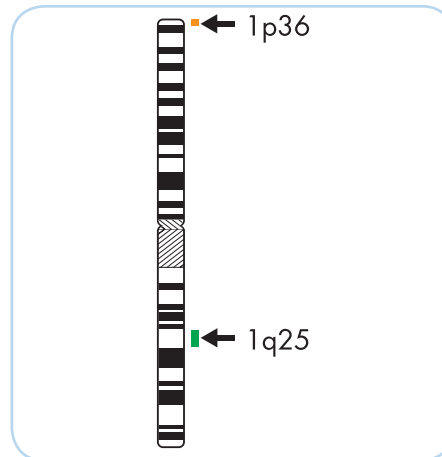
The ZytoLight® SPEC 1p36/1q25 Dual Color Probe (PL34) is intended to be used for the qualitative detection of deletions involving the human chromosomal region 1p36.31 as well as the detection of chromosome 1q25.3 specific sequences in formalin-fixed, paraffin-embedded specimens, such as glioma, by fluorescence *in situ* hybridization (FISH). The probe is intended to be used in combination with the ZytoLight® FISH-Tissue Implementation Kit (Prod. No. Z-2028-5/-20).

The product is intended for professional use only. All tests using the product should be performed in a certified, licensed anatomic pathology laboratory under the supervision of a pathologist/human geneticist by qualified personnel. The probe is intended to be used as an aid to the differential diagnosis of glioma and therapeutic measures should not be initiated based on the test result alone.

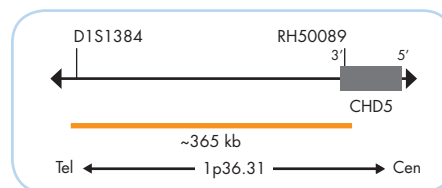
## Probe Description

The ZytoLight® SPEC 1p36/1q25 Dual Color Probe is composed of:

- ZyOrange (excitation 547 nm/emission 572 nm) labeled polynucleotides (~4.5 ng/μl), which target sequences mapping in 1p36.31\*\* (chr1:5,808,946-6,176,336)
- ZyGreen (excitation 503 nm/emission 528 nm) labeled polynucleotides (~10.0 ng/μl), which target sequences mapping in 1q25.3\*\* (chr1:184,271,714-184,986,522).
- Formamide based hybridization buffer



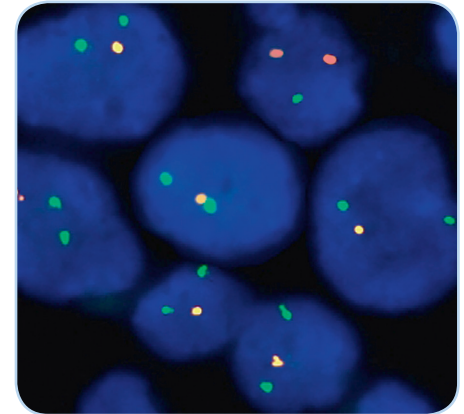
Ideogram of chromosome 1 indicating the hybridization locations.



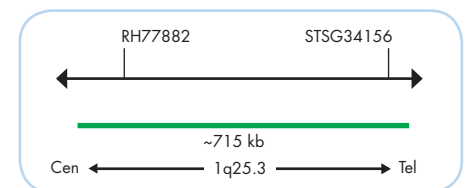
SPEC 1p36 Probe map (not to scale).

## Results

Using the SPEC 1p36/1q25 Dual Color Probe in a normal interphase nucleus, two orange and two green signals are expected. In a cell with deletions affecting the 1p36 locus, one or no copy of the orange signal will be observed.



SPEC 1p36/1q25 Dual Color Probe hybridized to a glioma tissue section with 1p36 deletion as indicated by one orange signal in each nucleus.



SPEC 1q25 Probe map (not to scale).

Prod. No.	Product	Label	Tests* (Volume)
Z-2075-50	ZytoLight SPEC 1p36/1q25 Dual Color Probe		5 (50 μl)
Z-2075-200	ZytoLight SPEC 1p36/1q25 Dual Color Probe		20 (200 μl)
Related Products			
Z-2272-20	ZytoLight Glioma 1p/19q Probe Set Incl. ZytoLight SPEC 1p36/1q25 Dual Color Probe, 0.2 ml; ZytoLight SPEC 19q13/19p13 Dual Color Probe, 0.2 ml; ZyBlack Quenching Solution, 8 ml		20
Z-2028-5	ZytoLight FISH-Tissue Implementation Kit Incl. Heat Pretreatment Solution Citric, 150 ml; Pepsin Solution, 1 ml; Wash Buffer SSC, 210 ml; 25x Wash Buffer A, 50 ml; DAPI/DuraTect-Solution, 0.2 ml		5
Z-2028-20	ZytoLight FISH-Tissue Implementation Kit Incl. Heat Pretreatment Solution Citric, 500 ml; Pepsin Solution, 4 ml; Wash Buffer SSC, 560 ml; 25x Wash Buffer A, 100 ml; DAPI/DuraTect-Solution, 0.8 ml		20

\* Using 10 μl probe solution per test. labeled products are only available in certain countries. All other countries research use only! Please contact your local dealer for more information.

\*\*According to Human Genome Assembly GRCh37/hg19