

ZytoFast® EBV Probe



Background

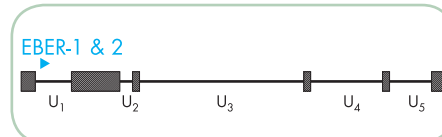
The ZytoFast® EBV Probe (PF29) is intended to be used for the qualitative detection of human Epstein-Barr virus (EBV) EBER RNA in formalin-fixed, paraffin-embedded specimens, such as diffuse large B-cell lymphomas (DLBCL) or Hodgkin lymphomas, by chromogenic *in situ* hybridization (CISH). The probe is intended to be used in combination with the ZytoFast® PLUS CISH Implementation Kit HRP-DAB (Prod. No. T-1063-40).

The product is intended for professional use only. All tests using the product should be performed in a certified, licensed anatomic pathology laboratory under the supervision of a pathologist/human geneticist by qualified personnel. The probe is intended to be used as an aid to the differential diagnosis of DLBCL or Hodgkin lymphomas and therapeutic action should not be initiated on the basis of the test result alone.

Probe Description

The ZytoFast® EBV is composed of:

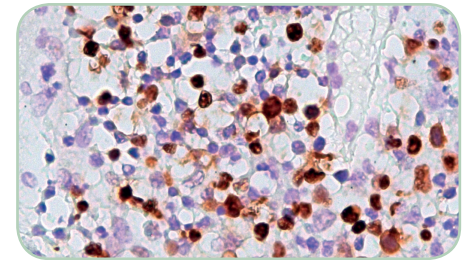
- Digoxigenin-labeled oligonucleotides (~ 0.2 ng/μl), which target mRNA sequences encoding EBER-1 and EBER-2 regions.



Schematic representation of the EBV genome with the EBER-1 and EBER-2 encoding region indicated in blue. U1-U5 indicate unique nucleotide sequences, hatched boxes represent terminal and internal repeats.

Results

A positive reactivity for Epstein-Barr-virus (EBV) EBER RNA in the target cells is indicated by a distinctly stained nucleus. Colored precipitates, which can be clearly distinguished from the background, will be dark brown when using DAB for detection.



EBV infected tonsil tissue hybridized with ZytoFast® EBV Probe, detected with ZytoFast® PLUS CISH Implementation Kit HRP-DAB.

Prod. No.	Product	Label	Tests* (Volume)
T-1114-400	ZytoFast EBV Probe	DIG	40 (400 μl)
Related Products			
T-1063-40	ZytoFast PLUS CISH Implementation Kit HRP-DAB		40
	Incl. Heat Pretreatment Solution EDTA, 500 ml; Pepsin Solution, 4 ml; 20x Wash Buffer TBS, 4x 50 ml; Mouse-anti-DIG, 4 ml; Anti-Mouse-HRP-Polymer, 4 ml; DAB Solution A, 0.3 ml; DAB Solution B, 10 ml; Nuclear Blue Solution, 20 ml; Mounting Solution (alcoholic), 4 ml		

* Using 10 μl probe solution per test. labeled products are only available in certain countries. All other countries research use only! Please contact your local dealer for more information.